

# **Cutter Controller Beta and Full Installation Guide**

**Version: V1.03**

**Issue Date: 24 November 2015**

**Author: © Ian Wadsworth 2014 - 2015**

## Table of Contents

<b>1. DOCUMENT DETAILS .....</b>	<b>3</b>
1.1 Summary .....	4
1.2 Supersedes .....	4
1.3 Version History .....	4
1.4 Copyright.....	4
<b>2. SYSTEM REQUIREMENTS INFORMATION .....</b>	<b>5</b>
2.1 System Requirements.....	6
<b>3. INSTALLATION .....</b>	<b>7</b>
3.1 The Set-up Wizard .....	8
3.2 For Full and Trial Versions Only.....	15

## Table of Pictures

PICTURE 1 .NET FRAMEWORK 3.5 SP1 NOT FOUND .....	8
PICTURE 2 WINDOWS USER ACCOUNT CONTROL (VISTA/WINDOWS 7/ WINDOWS 8/WINDOWS 10).....	8
PICTURE 3 CUTTER CONTROLLER SET UP WIZARD .....	9
PICTURE 4 THE CANCEL BUTTON CLICKED .....	9
PICTURE 5 LICENCE AGREEMENT FORM.....	10
PICTURE 6 DESTINATION FOLDER .....	10
PICTURE 7 DESTINATION FOLDER DOESN'T EXIST .....	11
PICTURE 8 DESTINATION FOLDER EXISTS.....	11
PICTURE 9 START MENU FOLDER .....	11
PICTURE 10 START MENU FOLDER UNDER PROGRAMS IN WINDOWS XP.....	12
PICTURE 11 ADD A DESKTOP SHORTCUT AND QUICK LAUNCH ICON IN WINDOWS XP.....	12
PICTURE 12 READY TO INSTALL.....	13
PICTURE 13 POP-UP WHEN THE CUTTER CONTROLLER IS RUNNING.....	13
PICTURE 14 POP-UP WHEN THE CUTTER CONTROLLER IS RUNNING (WINDOWS 7/8.X/10) .....	14
PICTURE 15 INSTALL COMPLETE.....	14
PICTURE 16 LICENCE A PRODUCT FOR CUTTER CONTROLLER .....	15
PICTURE 17 A PREVIOUS LICENCE FILE HAS BEEN FOUND .....	15

# 1. Document Details

## 1.1 Summary

This is the release for the Cutter Controller Beta and Full release installer 1.03.

## 1.2 Supersedes

None.

## 1.3 Version History

Version	Date	Details
1.00	1 August 2014	Authors & Contributors at this version Ian Wadsworth.  First issue.

## 1.4 Copyright

This document, test files, executables and related files are copyright of Ian Wadsworth (except where indicated), and must not be distributed to any un-authorized testers without the consent of Ian Wadsworth.

## **2. System Requirements Information**

## 2.1 System Requirements

- Requires Windows XP, Windows Vista, Windows 7, Windows 8.x or Windows 10.
- A mouse or pointing device.
- A colour monitor of at least 1080 x 720 pixels.
- At least 10MB of hard disk space
- The application requires between 30MB – 200MB of DRAM, depending on the drawing loaded.
- Requires the Microsoft .NET Framework 3.5 Service Pack 1 (Requires at least Service Pack 2 Win XP), if not already installed. The installer will detect if the framework is installed or not.
  - If you have Internet access it can be downloaded from <http://www.microsoft.com/en-gb/download/details.aspx?id=25150> (about 235MB)
  - If no Internet access, it may be on the operating systems install disk.
- A USB or Serial COM ports
- At least 30MB for the virtual printer driver (if used)

The supplied files are (after installing): -

```
_*.cap (the supplied custom machine files)
*.licence (the licence file)
CutterController.exe
CutterControllerBetaAndFullReleaseUserGuide.pdf
CutterControllerMacros.gms
eula.rtf
FolderOpen.ico
FTD2XX_NET.dll
LicenceAProduct.exe
MatRollList.txt
OpenCutterControllerBetaSettingsFolder.bat
QuickStartGuideforCricuts.pdf
unins000.dat
unins000.exe
UserNamedCuttersAndSettingsList.dat
```

# 3. Installation

## 3.1 The Set-up Wizard

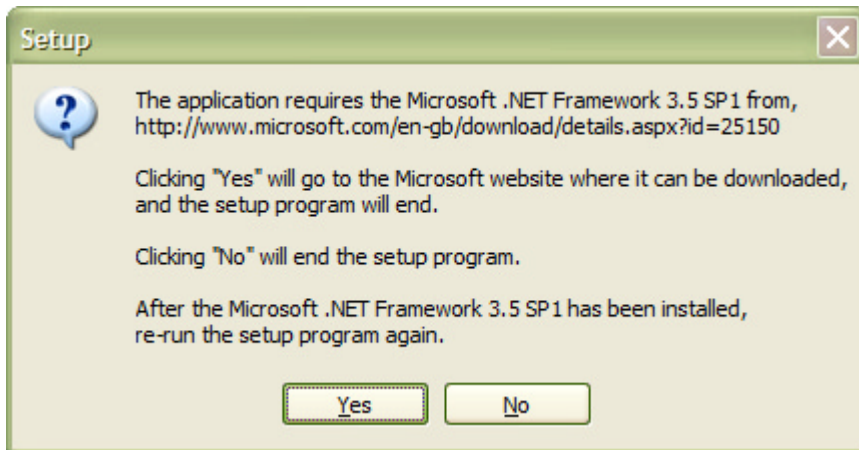
Installing over an existing installation will not overwrite the `MatRollList.txt`, `UserNamedCuttersAndSettingsList.dat` and the user created `*.ccap` files. The `*.licence` file for a Full or Trial version will not be overwritten.

Clicking on the set-up file `SetupCutterControllerBetaReleaseVx-xx.exe` or `SetupCutterControllerFullReleaseVx-xx.exe` will launch the installer (see Picture 3 Cutter Controller Set Up Wizard). Depending on the Windows Operating System used, you may get the 'User Account Control' pop up (see Picture 2 Windows User Account Control (Vista/Windows 7/ Windows 8/Windows 10)), click 'Yes' to continue.

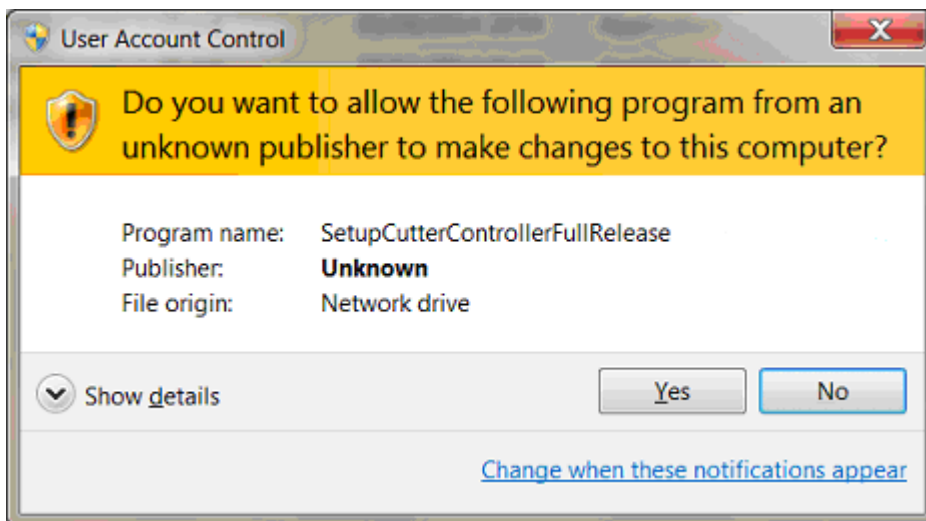
Note: the version number may to different to the one displayed.

If the required .NET framework isn't installed a pop message will be displayed see Picture 1 .NET Framework 3.5 SP1 not found . The framework will need to be installed before the installation can be re-started.

Picture 1 .NET Framework 3.5 SP1 not found



Picture 2 Windows User Account Control (Vista/Windows 7/ Windows 8/Windows 10)



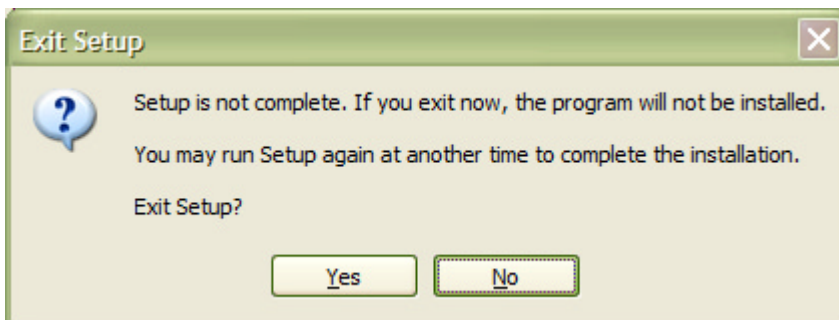
Click the 'Next' button to continue, or the 'Cancel' (see Picture 4 The Cancel Button Clicked) at anytime during the installation will stop it.



Picture 3 Cutter Controller Set Up Wizard

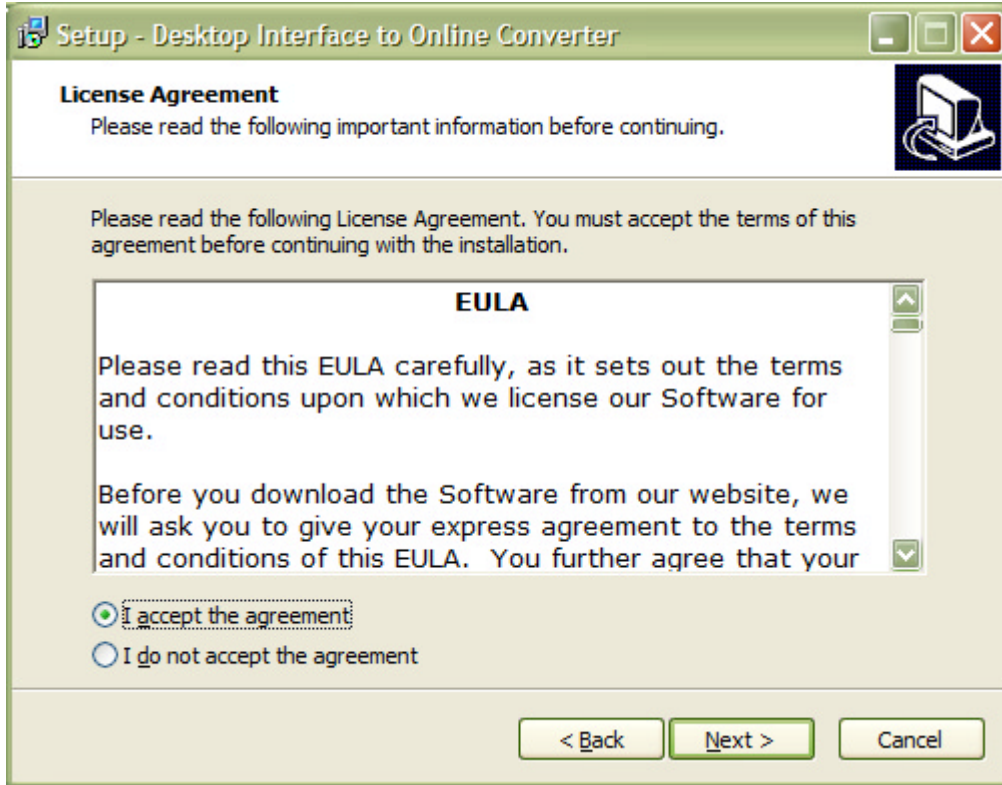


Picture 4 The Cancel Button Clicked



Read the licence agreement and either accept or reject it. If accepted, click on the 'Next' button.

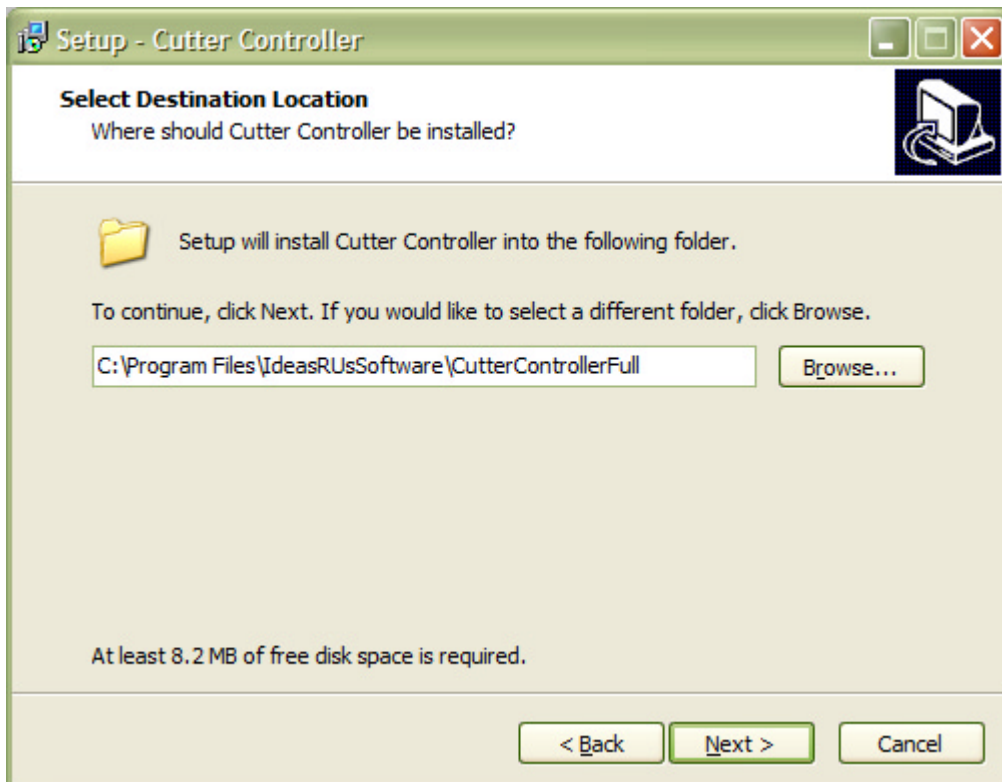
Picture 5 Licence Agreement Form



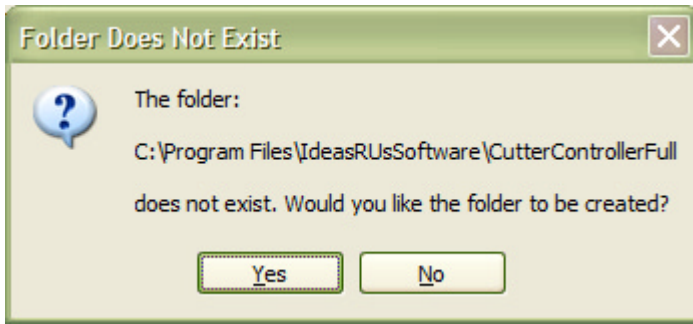
The destination folder for the installation can be changed from the default location, by clicking the 'Browse' button and selecting the new destination folder. See Picture 6 Destination Folder.

If the destination folder doesn't exist or if it already exists, there will be a pop message box asking you what to do. Click either 'Yes' or 'no'. See Picture 7 Destination Folder doesn't Exist and Picture 8 Destination Folder Exists.

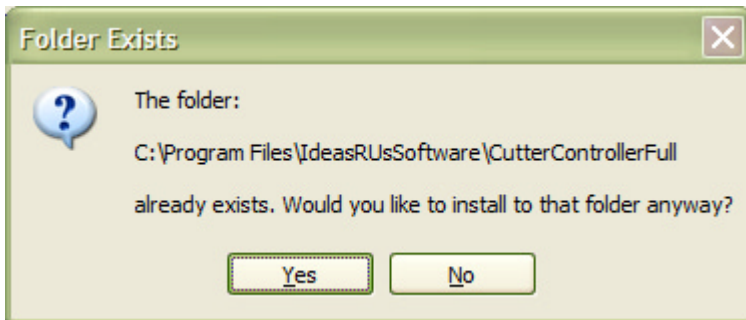
Picture 6 Destination Folder



Picture 7 Destination Folder doesn't Exist

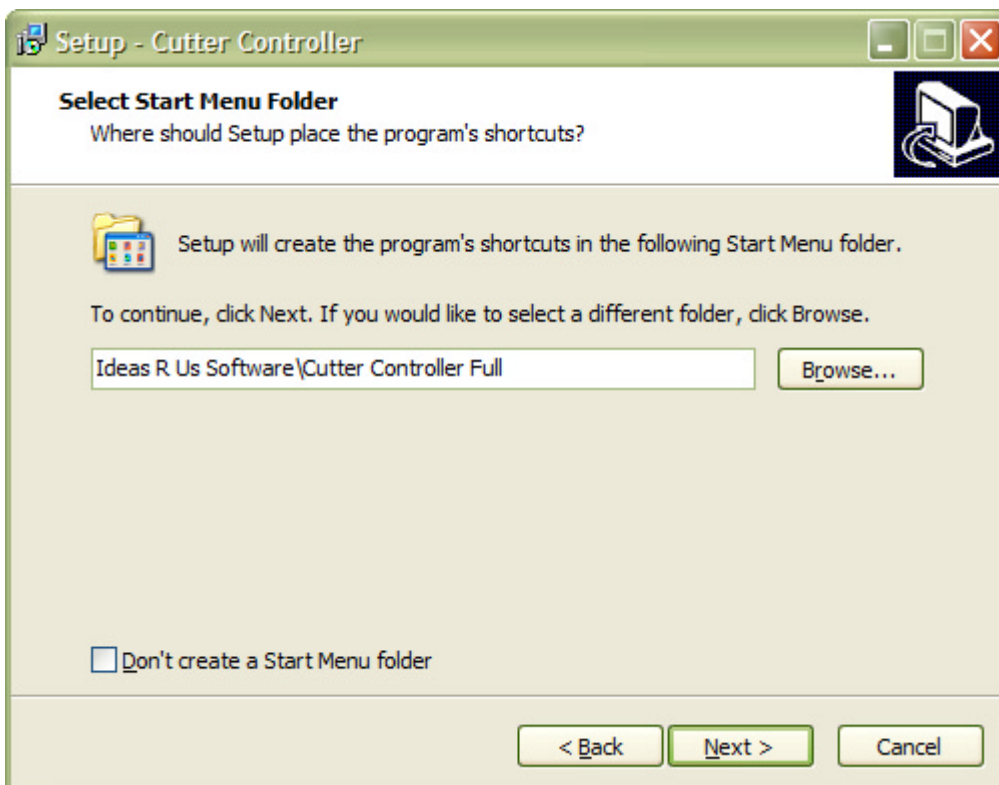


Picture 8 Destination Folder Exists

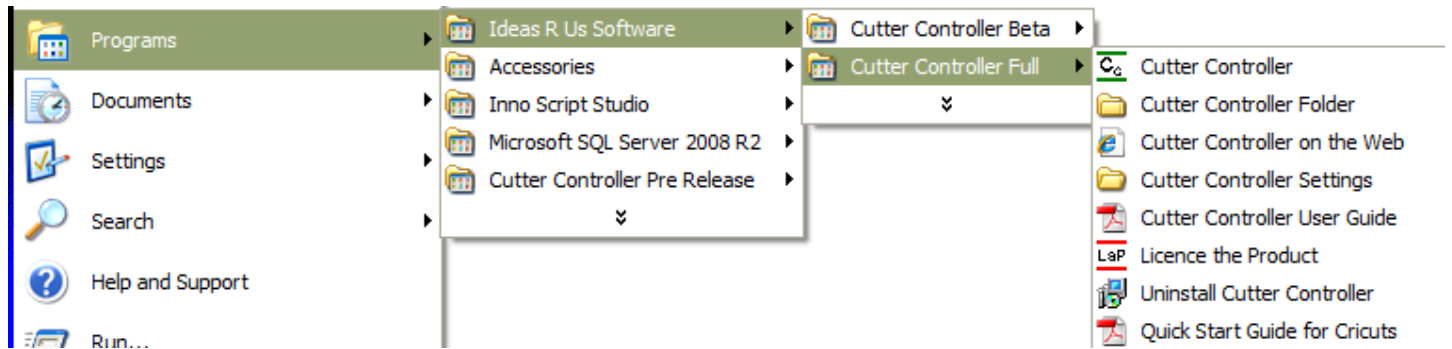


You can choose to add a Start Menu folder (see Picture 9 Start Menu Folder) to the Program's shortcut (see Picture 10 Start Menu Folder under Programs in Windows XP) that can be renamed. Windows 8.x does not have a Start Menu. Checking the 'Don't create a Start Folder Menu folder' box will not create the folder. Click the 'Next' button.

Picture 9 Start Menu Folder

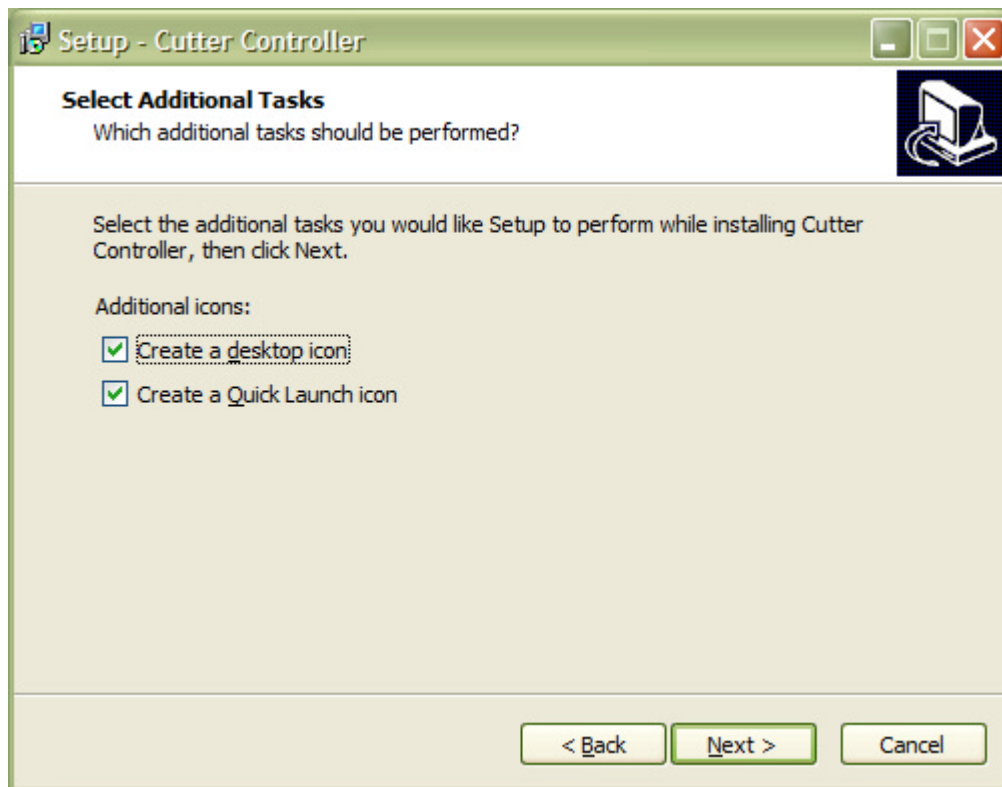


Picture 10 Start Menu Folder under Programs in Windows XP



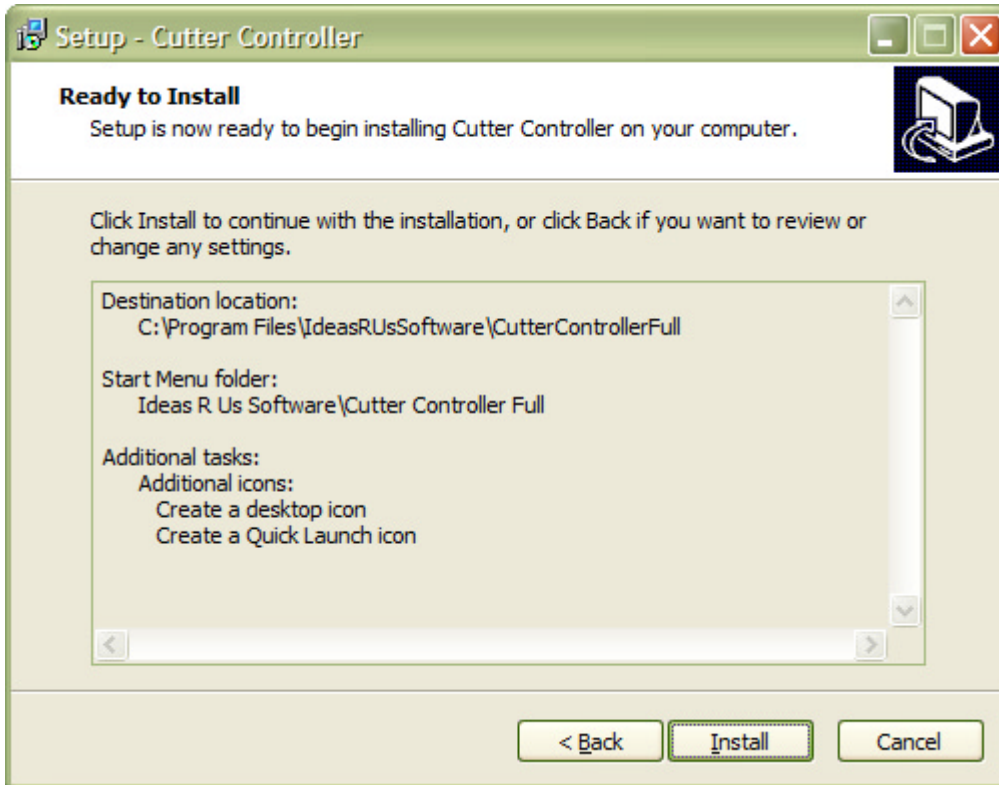
Choose to add a desktop and/or a quick launch icon (depends on the Operating System, shown for Windows XP). Click the 'Next' button.

Picture 11 Add a Desktop Shortcut and Quick Launch Icon in Windows XP



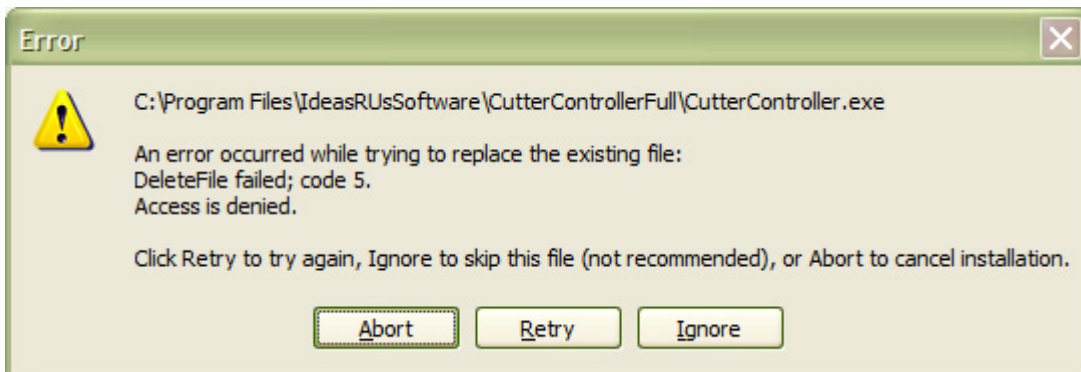
This is the last form, and the last chance to cancel the installation. Click the 'Install' button.

Picture 12 Ready to Install



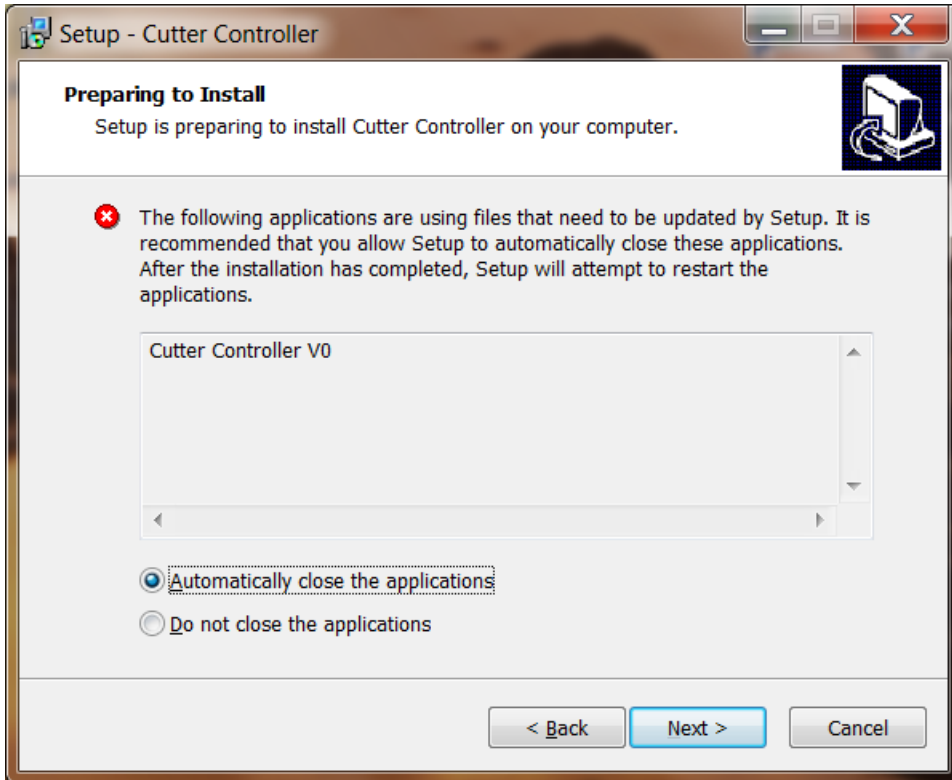
The pop-up below (or similar) will be when Cutter Controller is running. Close the Cutter Controller application and click 'Retry'.

Picture 13 Pop-up when the Cutter Controller is running



The pop-up below (or similar) will be when Cutter Controller is running on Windows 7/8.x/10. Click the 'Next' button.

Picture 14 Pop-up when the Cutter Controller is Running (Windows 7/8.x/10)



Clicking on the 'Finish' button will launch the Cutter Controller application if the 'Launch Cutter Controller' box is checked.

Picture 15 Install Complete



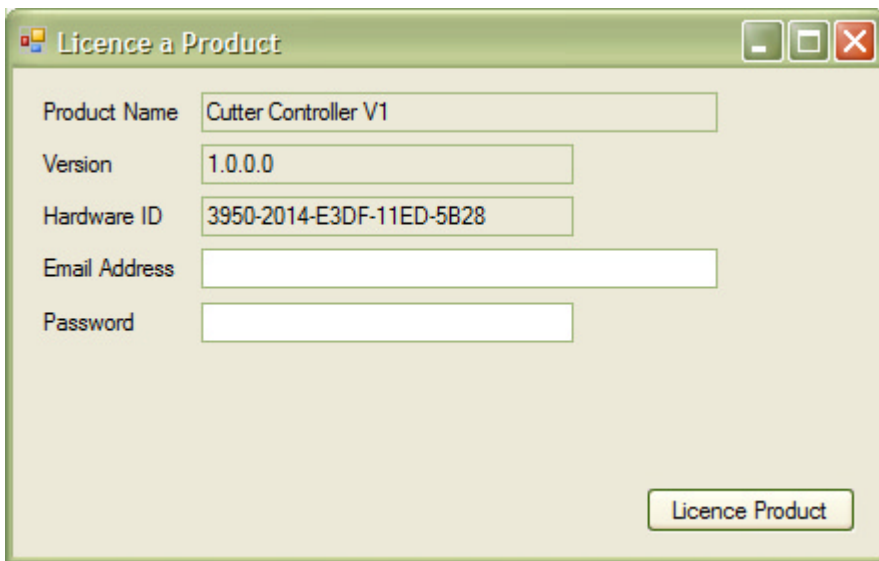
## 3.2 For Full and Trial Versions Only

Clicking the 'Finish' button will start the 'Licence a Product' application (see Picture 16 Licence a Product for Cutter Controller).

If this is an update or an upgrade from Trial to Full of Cutter Controller, the pop up Picture 17 A Previous Licence file has been found will appear. If this is an update then click 'Yes', but for an upgrade click 'No'.

More information is given in the Cutter Controller User Guide in the section 'Licence the Full or Trial Application'.

**Picture 16 Licence a Product for Cutter Controller**



The screenshot shows a dialog box titled "Licence a Product" with a standard Windows window border. It contains five input fields: "Product Name" (filled with "Cutter Controller V1"), "Version" (filled with "1.0.0.0"), "Hardware ID" (filled with "3950-2014-E3DF-11ED-5B28"), "Email Address" (empty), and "Password" (empty). A "Licence Product" button is located at the bottom right of the dialog.

**Picture 17 A Previous Licence file has been found**

